

# Special Educational Needs (SEN) Information Report

## St Mary's Catholic Primary School



Approved by: [Name] Date: [Date]

Last reviewed on: September 2025

Next review due by: September 2026

## Contents

Contents .....	2
1. What types of SEN does the school provide for? .....	3
2. Which staff will support my child, and what training have they had? .....	4
3. What should I do if I think my child has SEN? .....	5
4. How will the school know if my child needs SEN support? .....	6
5. How will the school measure my child's progress? .....	6
6. How will I be involved in decisions made about my child's education? .....	7
7. How will my child be involved in decisions made about their education? .....	7
8. How will the school adapt its teaching for my child? .....	7
9. How will the school evaluate whether the support in place is helping my child? .....	9
10. How will the school resources be secured for my child? .....	9
11. How will the school make sure my child is included in activities alongside pupils who don't have SEN? ...	10
12. How does the school make sure the admissions process is fair for pupils with SEN or a disability? .....	10
13. How does the school support pupils with disabilities? .....	10
14. How will the school support my child's mental health and emotional and social development? .....	10
15. What support will be available for my child as they transition between classes or settings or in preparing for adulthood? .....	11
16. What support is in place for looked-after and previously looked-after children with SEN? .....	11
17. What should I do if I have a complaint about my child's SEN support? .....	11
18. What support is available for me and my family? .....	12
19. Glossary .....	12

---

Dear Parents and Carers,

The aim of this information report is to explain how we implement our SEND policy. In other words, we want to show you how special educational needs support works in our school.

If you want to know more about our arrangements for SEND, please read our SEND policy or make contact with the school and we will arrange for our SENDCo, Mrs Sharon Betts to meet with you and talk to you.

You can find it on our website <https://www.stmarymarnhull.dorset.sch.uk/>

At St Mary's Catholic Primary School, we aim to ensure that all children are fully included in the life of our school and able to engage in the rich, exciting and rewarding opportunities we offer. We work hard to adapt our provision to enable every child to take part both inside the classroom and in the wider school environment. The information in this report helps to highlight how we do this.

**Note:** If there are any terms we've used in this information report that you're unsure of, you can look them up in the Glossary at the end of the report.

We look forward to working with you!



## 1. What types of SEN does the school provide for?

Our school provides for pupils with the following needs:

AREA OF NEED	CONDITION
Communication and interaction	Autism spectrum disorder (ASD)
	Speech and language difficulties
Cognition and learning	Specific learning difficulties, including dyslexia, dyspraxia, dyscalculia
	Moderate learning difficulties
Social, emotional and mental health	Attention deficit hyperactivity disorder (ADHD)
	Attention deficit disorder (ADD)
Sensory and/or physical	Hearing impairments
	Visual impairment
	Multi-sensory impairment
	Physical impairment

## 2. Which staff will support my child, and what training have they had?

### Our special educational needs co-ordinator, or SENDCO

Our SENDCO is Mrs Sharon Betts.

She has over 25 years' experience in this role in several schools. She is also our Headteacher.

She is working towards the National Professional Qualification for Special Educational Needs Co-ordination.

### Class Teachers

All of our teachers receive in-house SEN training, and are supported by the SENCO to meet the needs of pupils who have SEN.

All teachers have undertaken Trauma Informed Schools Training in addition to ongoing training throughout the school year.

### Teaching Assistants (TAs)

We have a small team of 4 TAs, including one higher-level teaching assistants (HLTAs) who are trained to deliver SEN provision.

We have 2 teaching assistants who are trained to deliver Emotional Literacy Support (ELSA) in addition to targeted, Speech and Language interventions, Phonics, Beat Dyslexia

In the last academic year, TAs have been trained in Trauma Informed Schools approach, Attention Autism and Phonics.

## External agencies and experts

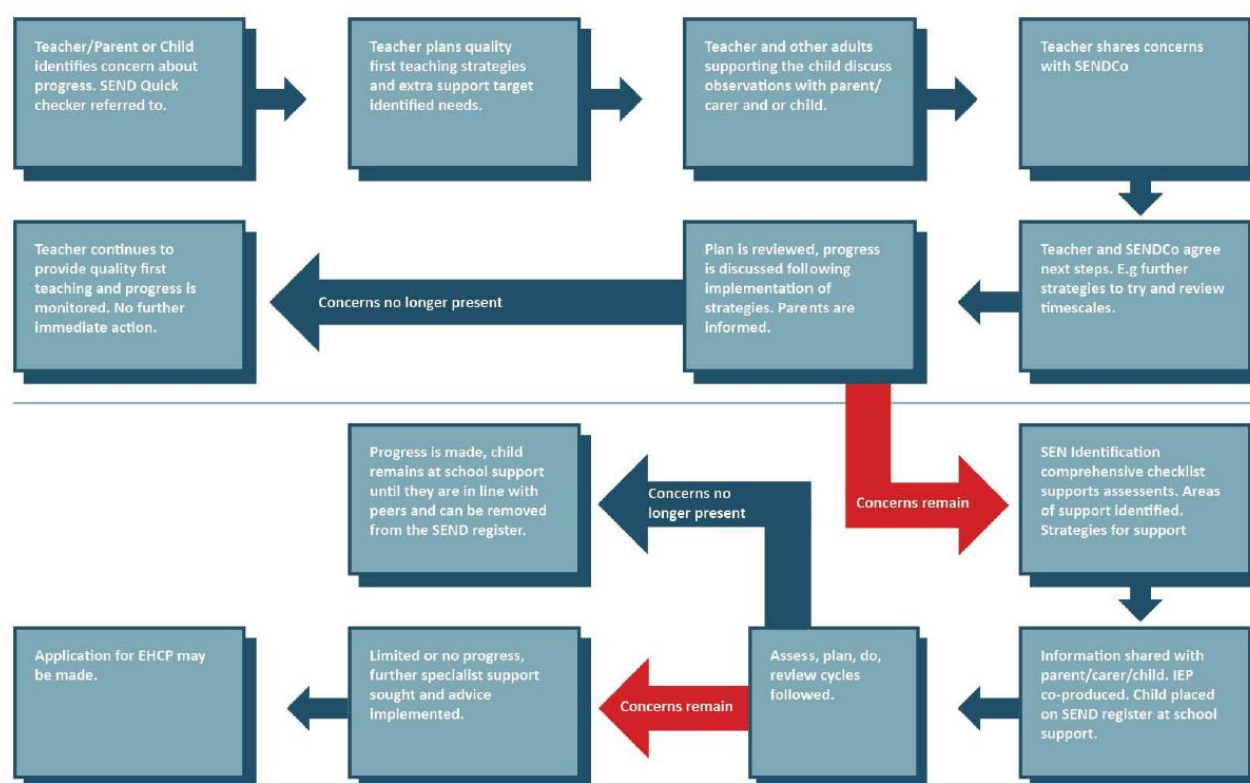
Sometimes we need extra help to offer our pupils the support they need. Whenever necessary we will work with external support services to meet the needs of our pupils with SEN and to support their families. These include:

- Speech and language therapists
- Educational psychologists
- Occupational therapists
- GPs or paediatricians
- School nurses
- Child and adolescent mental health services (CAMHS)
- Social services and other local authority (LA) -provided support services
- Dorset Reading Partnership

## 3. What should I do if I think my child has SEN?

At St Mary's Catholic Primary School, we follow the Plymouth CAST SEND Pathway. This follows a graduated approach to SEND.

### Identification of Special Educational Needs - Pathway



If you think your child might have SEN, the first person you should tell is your child's teacher. You can do this either by speaking directly to them before or after school, or message them through Class Dojo to arrange a meeting.

They will pass the message on to our SENCO, Mrs Sharon Betts who will be in touch to discuss your concerns. You can also contact the SENCO directly on 01258 820417 or email [sbetts@stmarymarnhull.dorset.sch.uk](mailto:sbetts@stmarymarnhull.dorset.sch.uk)

We will meet with you to discuss your concerns and try to get a better understanding of what your child's strengths and difficulties are.

Together we will decide what outcomes to seek for your child and agree on next steps. If we decide that your child needs SEN support, we will formally notify you in writing and your child will be added to the school's SEND register.

## 4. How will the school know if my child needs SEN support?

All our class teachers are aware of SEN and are on the lookout for any pupils who aren't making the expected level of progress in their schoolwork or socially. This might include reading, writing, number work etc.

If the teacher notices that a pupil is falling behind, they try to find out if the pupil has any gaps in their learning. If they can find a gap, they will support the pupil to fill it. This may be by slightly adapting the way things are being taught, providing some additional short term support, additional teaching or working with you to support your child with some additional practice at home. Pupils who don't have SEN usually make progress quickly once the gap in their learning has been filled.

If the pupil is still struggling to make the expected progress, the teacher will talk to the SENCO, and will contact you to discuss the possibility that your child has SEN.

The SENCO will observe the pupil in the classroom and in the playground to see what their strengths and difficulties are. They will have discussions with your child's teacher/, to see if there have been any issues with, or changes in, their progress, attainment or behaviour. They will also compare your child's progress and development with their peers and available national data.

The SENCO will ask for your opinion and speak to your child to get their input as well. They may also, where appropriate, ask for the opinion of external experts such as a speech and language therapist, an educational psychologist, or a paediatrician.

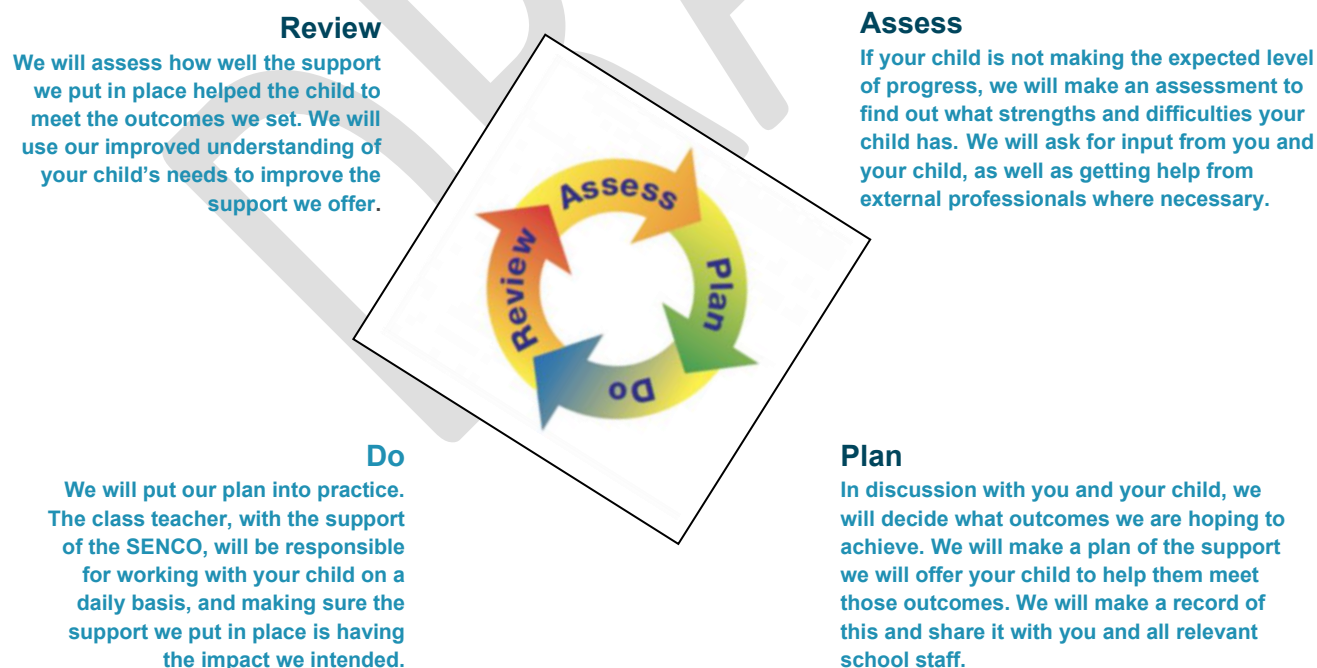
Based on all of this information, the SENCO will decide whether your child needs SEN support. You will be told the outcome of the decision in writing.

If your child does need SEN support, their name will be added to the school's SEND register, and the SENCO will work with you to create a SEN support plan for them.

## 5. How will the school measure my child's progress?

We will follow the 'graduated approach' to meeting your child's SEN needs.

The graduated approach is a 4-part cycle of **assess, plan, do, review**.



As a part of the planning stage of the graduated approach, we will set outcomes that we want to see your child achieve.



Whenever we run an intervention with your child, we will assess them before the intervention begins. This is known as a 'baseline assessment'. We do this so we can see how much impact the intervention has on your child's progress.

We will track your child's progress towards the outcomes we set over time and improve our offer as we learn what your child responds to best.

This process will be continual. If the review shows a pupil has made progress, they may no longer need the additional provision made through SEN support. For others, the cycle will continue and the school's targets, strategies and provisions will be revisited and refined.

## **6. How will I be involved in decisions made about my child's education?**

We will provide annual reports on your child's progress. Your child's class/form teacher will meet you at least twice a year, with an opportunity offered to discuss school report in the final term. This is to:

- Set clear outcomes for your child's progress
- Review progress towards those outcomes
- Discuss the support we will put in place to help your child make that progress
- Identify what we will do, what we will ask you to do, and what we will ask your child to do

The SENCO may also attend these meetings to provide extra support.

We know that you're the expert when it comes to your child's needs and aspirations. So, we want to make sure you have a full understanding of how we're trying to meet your child's needs, so that you can provide insight into what you think would work best for your child.

We also want to hear from you as much as possible so that we can build a better picture of how the SEN support we are providing is impacting your child outside of school.

If your child's needs or aspirations change at any time, please let us know right away so we can keep our provision as relevant as possible.

After any discussion we will make a record of any outcomes, actions and support that have been agreed. This record will be shared with all relevant staff, and you will be given a copy.

If you have concerns that arise between these meetings, please contact your child's class teacher. You can do this either by speaking directly to them before or after school, or message them through Class Dojo.

## **7. How will my child be involved in decisions made about their education?**

The level of involvement will depend on your child's age and level of competence. We recognise that no 2 children are the same, so we will decide on a case-by-case basis, with your input.

We may seek your child's views by asking them to:

- Attend meetings to discuss their progress and outcomes
- Prepare a presentation, written statement, video, drawing, etc.
- Discuss their views with a member of staff who can act as a representative during the meeting
- Complete a survey

## **8. How will the school adapt its teaching for my child?**

Your child's teacher is responsible and accountable for the progress and development of all the pupils in their class.

High-quality teaching is our first step in responding to your child's needs. We will make sure that your child has access to a broad and balanced curriculum in every year they are at our school.

We will adapt how we teach to suit the way the pupil works best. There is no '1 size fits all' approach to adapting the curriculum, we work on a case-by case basis to make sure the adaptations we make are meaningful to your child.

These adaptations include:

---

- Adapting our curriculum to make sure all pupils are able to access it, for example, by grouping, 1-to-1 work, adapting the teaching style or content of the lesson, etc.
- Adapting our teaching, for example, giving longer processing times, pre-teaching of key vocabulary, reading instructions aloud, etc.
- Adapting our resources and staffing
- Using recommended aids, such as laptops, coloured overlays, visual timetables, larger font, etc.
- Teaching assistants will support pupils on a 1-to-1 basis when working on interventions which require individual support, an Education and Healthcare Plan (EHCP) stipulates specific interventions or where it has been agreed by all that a pupil requires this level of support in order to keep themselves safe.
- Teaching assistants will support pupils in small groups when appropriate.

We may also provide the following interventions:

AREA OF NEED	CONDITION	HOW WE SUPPORT THESE PUPILS
Communication and interaction	Autism spectrum disorder (ASD)	Visual timetables Social stories Attention Autism
	Speech and language difficulties	Speech and language therapy
Cognition and learning	Specific learning difficulties, including dyslexia, dyspraxia and dyscalculia	Writing slope Word mats Coloured overlays Beat Dyslexia Accelerated Reader Phonics Move to Learn/Learn to Move
Social, emotional and mental health	ADHD, ADD	Quiet workstation Therabands Wobble cushions
	Adverse childhood experiences and/or mental health issues	Trauma Informed Schools Practitioner Emotional Literacy Support Assistant (ELSA) Time in Sanctuary (nurture room) Zones of Regulation ear defenders weighted blanket sensory tent sensory boxes sensory circuits



Sensory and/or physical	Hearing impairment	We have Promethean boards which don't require overhead projectors which can be noisy.  All areas are clearly marked as appropriate
	Visual impairment	Limiting classroom displays
	Multi-sensory impairment	ear defenders weighted blanket sensory tent sensory boxes sensory circuits
	Physical impairment	We are wheelchair accessible to all teaching areas – we have a ramp to gain access to the classrooms in Early Years and KS1 rooms as well as ramp into breakfast and afterschool club

These interventions are part of our contribution to Dorset's local offer. <https://www.dorsetcouncil.gov.uk/children-families/sen-and-disability-local-offer/dorsets-local-offer>

Please see our accessibility plan which can be found on the school website: [https://www.stmarymarnhull.dorset.sch.uk/special\\_educational\\_needs](https://www.stmarymarnhull.dorset.sch.uk/special_educational_needs) which covers how we are increasing the extent to which disabled pupils can participate in the curriculum.

## 9. How will the school evaluate whether the support in place is helping my child?

We will evaluate the effectiveness of provision for your child by:

- Reviewing their progress towards their goals each term
- Reviewing the impact of interventions after 6 weeks
- Using pupil questionnaires
- Monitoring by the SENCO
- Using provision maps to measure progress
- Holding an annual review (if they have an education, health and care (EHC) plan)

## 10. How will the school resources be secured for my child?

It may be that your child's needs mean we need to secure:

- Extra equipment or facilities
- More teaching assistant hours
- Further training for our staff
- External specialist expertise

If that's the case, we will consult with external agencies to get recommendations on what will best help your child access their learning.

The school will cover up to £6,000 of any necessary costs. If funding is needed beyond this, we will seek it from our local authority. This will usually require applying to an Educational Health and Care Plan. This plan may include recommendations about the way in which any additional funding should be used. If the school needs to recruit

additional staff, they will follow the Plymouth Cast recruitment policy. Approval for all posts must be sought from the Trust before the school can begin the recruitment process.

## **11. How will the school make sure my child is included in activities alongside pupils who don't have SEN?**

All of our extra-curricular activities and school visits are available to all our pupils, including our before and after-school clubs.

All pupils are encouraged to go on our school trips, including our residential trips.

All pupils are encouraged to take part in sports day, school plays, special workshops etc

No pupil is ever excluded from taking part in these activities because of their SEN or disability and we will make whatever reasonable adjustments are needed to make sure they can be included.

## **12. How does the school make sure the admissions process is fair for pupils with SEN or a disability?**

At St Mary's, we believe that 'Everyone matters and is loved by God', so when we are approached by either parents or the local Authority regarding admissions for prospective pupils with SEN or a disability we:

- Offer a tour of the school and a chance to discuss the child's individual needs, taking into careful consideration about how we can best accommodate the needs of the child.
- We work closely with the Local Authority during the consultation phase to ensure that before an EHCP plan is issued or amended, we will consider if we can meet the child's needs, as set out in the Plan.
- In line with our Admissions policy, a child whose Education, Health and Care Plan names the school will be admitted without regard for the oversubscription criteria, thus avoiding unfairly disadvantaging prospective pupils with a disability or special educational needs

## **13. How does the school support pupils with disabilities?**

- Resources are in place within classrooms for pupils who require support with sensory needs: wobble cushions, therabands, ear defenders, weighted blanket, sensory tent, sensory boxes etc. Any other reasonable adjustments will be made to accommodate individual's needs as appropriate.
- Children with SEND have equal access to extra-curricular clubs and support necessary to enable their attendance will be arranged as appropriate
- Please see our accessibility plan which can be found on the school website: [https://www.stmarymarnhull.dorset.sch.uk/special\\_educational\\_needs](https://www.stmarymarnhull.dorset.sch.uk/special_educational_needs) which covers how we are increasing the extent to which disabled pupils can participate in the curriculum.

## **14. How will the school support my child's mental health, and emotional and social development?**

All Schools within the Trust are working towards becoming Trauma Informed Schools and all adults have had training to help them recognise signs that children may be having difficulty socially, emotionally or mentally. Adults are trained in ways to support children, and all children have trusted adults that they can reach out to at times of difficulty.

We provide support for pupils to progress in their emotional and social development in the following ways:

- Pupils with SEN are encouraged to be part of the school council
- We survey all pupils at least once a year to seek their views about how well they are settled in school and how well they are connected to the adults and their peers. This is called our School Bonding Questionnaire
- Pupils with SEN are also encouraged to be part of any of our after-school clubs to promote teamwork/building friendships
- We provide extra pastoral support for listening to the views of pupils with SEN by having two ELSAs and a Trauma Informed Practitioner

- We have a 'zero tolerance' approach to bullying. To prevent bullying in the school we:
- constantly monitor behaviour to prevent potential bullying incidents from developing.
  - Teach children about the effects of bullying on children and about dealing with bullying. This will be done through RE, RSHE, Circle Time and assemblies.
  - Deal seriously with all concerns raised by children and parents/carers.
  - Hold the expectation that all bullying behaviour is unacceptable and use appropriate sanctions.
  - Ensure that the anti-bullying policy is valid for children, staff and parents.

## **15. What support will be available for my child as they transition between classes or settings, or in preparing for adulthood?**

### **Between years**

To help pupils with SEN be prepared for a new school year we:

- Ask both the current teacher and the next year's teacher to attend a final meeting of the year when the pupil's SEN is discussed
- Schedule lessons with the incoming teacher towards the end of the summer term

### **Between schools**

When your child is moving on from our school, we will ask you and your child what information you want us to share with the new setting.

### **Between phases**

The SENCO of the secondary school will come into our school for a meeting with our SENCO. They will discuss the needs of all the children who are receiving SEN support.

Pupils will be prepared for the transition by:

- Practising with a secondary school timetable
- Learning how to get organised independently
- Plugging any gaps in knowledge

## **16. What support is in place for looked-after and previously looked-after children with SEN?**

Mrs Sharon Betts is also the designated teacher and makes sure that all teachers understand how a looked-after or previously looked-after pupil's circumstances and their SEN might interact, and what the implications are for teaching and learning.

Children who are looked-after or previously looked-after will be supported much in the same way as any other child who has SEN. However, looked-after pupils will also have a personal education plan (PEP). We will make sure that the PEP and any SEN support plans or EHC plans are consistent and complement one another.

## **17. What should I do if I have a concern about my child's SEN support?**

If you have concerns about the progress your child is making or the support they are receiving, you should speak to the class teacher in the first instance. They may suggest that you have a meeting with the SENDCo to discuss your concerns and work together to agree how to address these. If you are still concerned you should follow the school complaints procedure. You can find a copy of that here [https://www.stmarymarnhull.dorset.sch.uk/school\\_policies](https://www.stmarymarnhull.dorset.sch.uk/school_policies)

## 18. What support is available for me and my family?

If you have questions about SEN, or are struggling to cope, please get in touch to let us know. We want to support you, your child and your family.

To see what support is available to you locally, have a look at Dorset's local offer:

<https://www.dorsetcouncil.gov.uk/children-families/sen-and-disability-local-offer/dorsets-local-offer>

or Somerset's Local offer: <https://www.somerset.gov.uk/children-families-and-education/the-local-offer/primary-school-5-to-11-years/>

Our local special educational needs and disabilities information, advice and support (SENDIAS) services are:

<https://family-action.org.uk/services/dorset-sendiass/>

<https://somensetsendias.org.uk/>

National charities that offer information and support to families of children with SEN are:

- [IPSEA](#)
- [SEND family support](#)
- [NSPCC](#)
- [Family Action](#)
- [Special Needs Jungle](#)

## 19. Glossary

- **Access arrangements** – special arrangements to allow pupils with SEN to access assessments or exams
- **Annual review** – an annual meeting to review the provision in a pupil's EHC plan
- **Area of need** – the 4 areas of need describe different types of needs a pupil with SEN can have. The 4 areas are communication and interaction; cognition and learning; physical and/or sensory; and social, emotional and mental health needs
- **CAMHS** – child and adolescent mental health services
- **Differentiation** – When teachers adapt how they teach in response to a pupil's needs
- **EHCP needs assessment** – the needs assessment is the first step on the way to securing an EHC plan. The local authority will do an assessment to decide whether a child needs an EHC plan
- **EHC plan** – an education, health and care (EHC) plan is a legally-binding document that sets out a child's needs and the provision that will be put in place to meet their needs
- **First-tier tribunal / SEND tribunal** – a court where you can appeal against the local authority's decisions about EHC needs assessments or plans and against discrimination by a school or local authority due to SEN
- **Graduated approach** – an approach to providing SEN support in which the school provides support in successive cycles of assessing the pupil's needs, planning the provision, implementing the plan, and reviewing the impact of the action on the pupil
- **Intervention** – a short-term, targeted approach to teaching a pupil with a specific outcome in mind
- **Local offer** – information provided by the local authority that explains what services and support are on offer for pupils with SEN in the local area
- **Outcome** – target for improvement for pupils with SEN. These targets don't necessarily have to be related to academic attainment
- **Reasonable adjustments** – changes that the school must make to remove or reduce any disadvantages caused by a child's disability
- **SENCO** – the special educational needs co-ordinator
- **SEN** – special educational needs

- **SEND** – special educational needs and disabilities
- **SEND Code of Practice** – the statutory guidance that schools must follow to support children with SEND
- **SEN information report** – a report that schools must publish on their website, that explains how the school supports pupils with SEN
- **SEN support** – special educational provision that meets the needs of pupils with SEN
- **Transition** – when a pupil moves between years, phases, schools or institutions or life stages

DRAFT